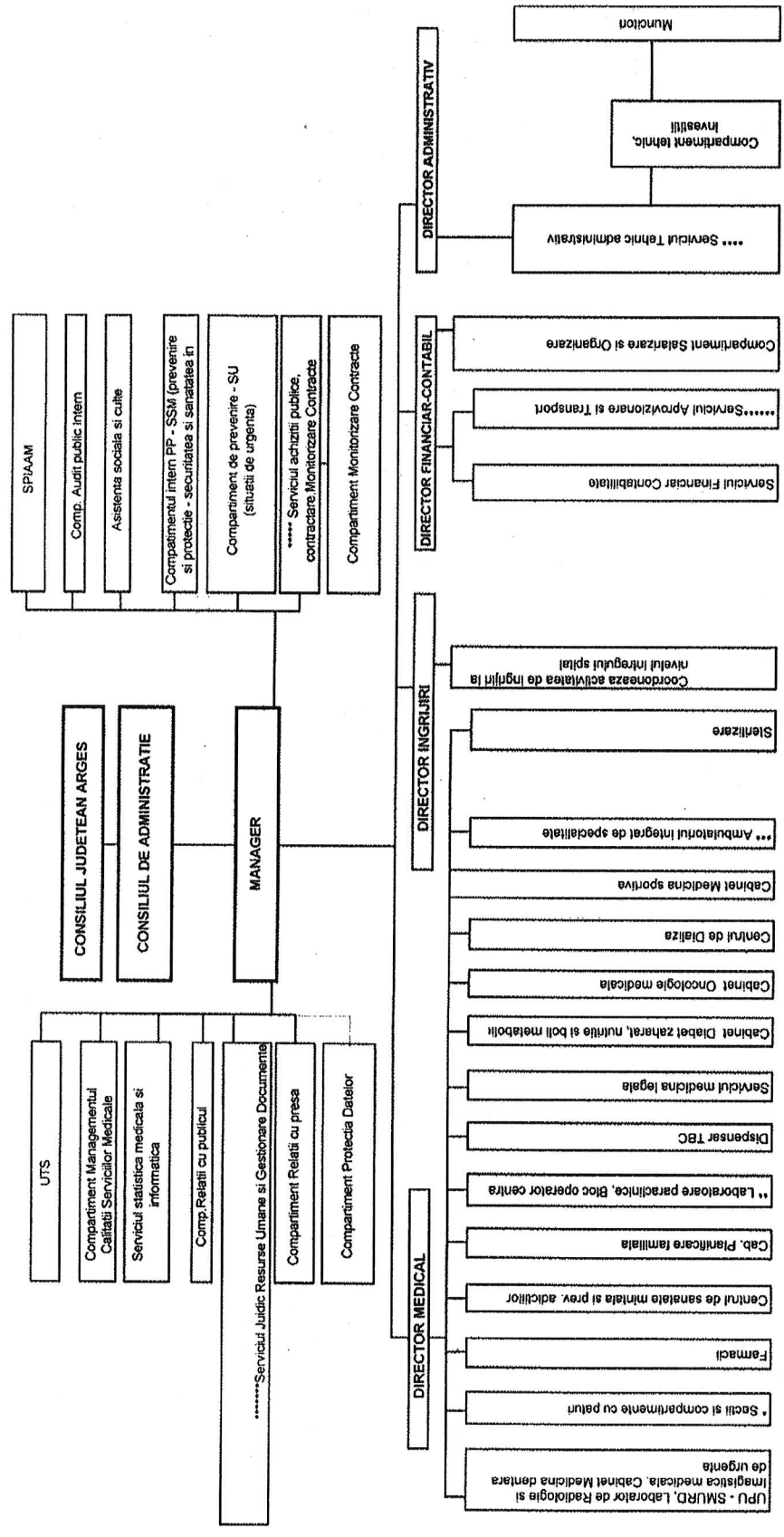


ORGANIGRAMA SPITALULUI JUDETEAN DE URGENTA PITESTI



	SPIAAM = Serviciul de prevenire a infectiilor asociate asistentei medicale
*	SECTII SI COMPARTIMENTE CU PATURI: Sectia Medicina internă I (Compartiment reumatologie, Compartiment nefrologie), Sectia Medicina internă II (Compartiment hematologie, Compartiment cardiologie interventionala), Sectia diabet zaharat, nutritie si boli metabolice, Compartiment Endocrinologie), Sectia Gastroenterologie, Sectia Cardiologie (Compartiment USTACC, Compartiment cardiologie interventionala), Sectia OG (Compartiment rooming-in), Sectia Neonatologie (Compartiment terapie intensiva, Compartiment prematuri, Compartiment rooming-in), Sectia Chirurgie I (Compartiment chirurgie toracica), Sectia Chirurgie II, Compartiment chirurgie vasculara, Sectia Urologie, Sectia Chirurgie plastica si microchirurgie reconstructiva (Compartiment pentru arsi), Sectia ORL (Compartiment chirurgie orala si maxilo faciala) si sala operatii, Sectia Ortopedie si traumatologie (Compartiment recuperare medicala ortopedie traumatologie), Sectia ATI (Compartiment toxicologie), Sectia Oncologie medicala, Sectia Psihiatrie, Compartiment Oftalmologie si bloc operator, Compartiment Dermatovenerologie, Sectia Neurologie (terapie acuta), Sectia Boli Infectioase adulti (Compartiment HIV/SIDA adulti), Sectia Boli infectioase copii (Compartiment HIV/SIDA copii), Sectia Neurochirurgie, Sectia Pneumologie
**	LABORATOARE: Laborator analize medicale, Laborator radiologie si imagistica medicală (RMN si CT), Serviciul Anatomie Patologica (Citologie, Histopatologie, Prosectura), Laborator recuperare, medicina fizica si balneologie, Bloc operator central, Laborator angiografie si cardiologie interventionala, Laborator radioterapie, Laborator Microbiologie.